

# REVV UP THE GOOD OLD SAMARITAN

SPRING BOOT ADMIN



Jatin Makhija



# About Me

(Jatin Makhija)



✓ Engineering Leader  
@DTDL, India



Worked with



Maker Breaker of  
applications



Vocalist,  
Drummer,  
Explorer

 jatinmakhija

 NotJustBond

 Jatin Makhija

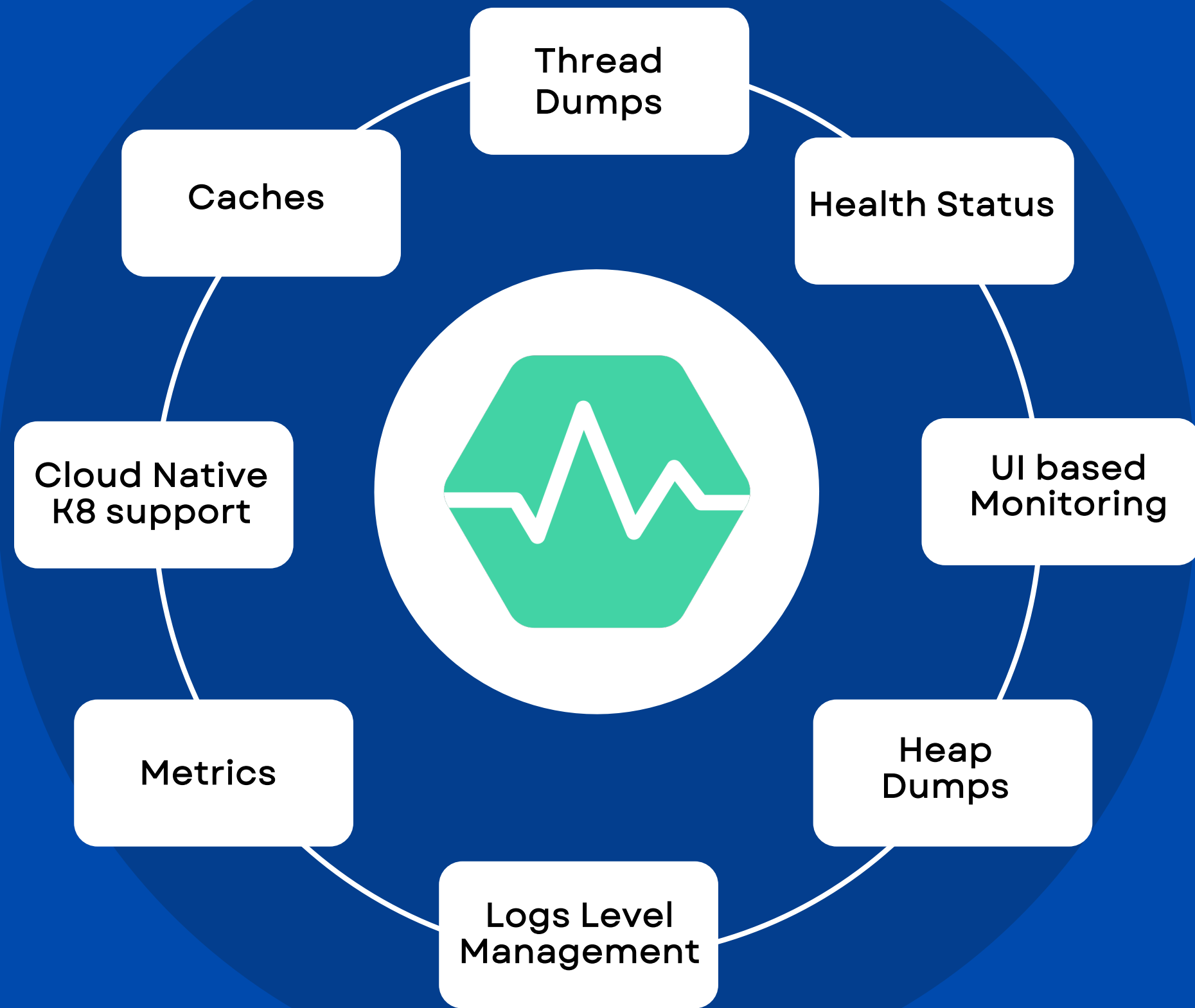
 SPRING





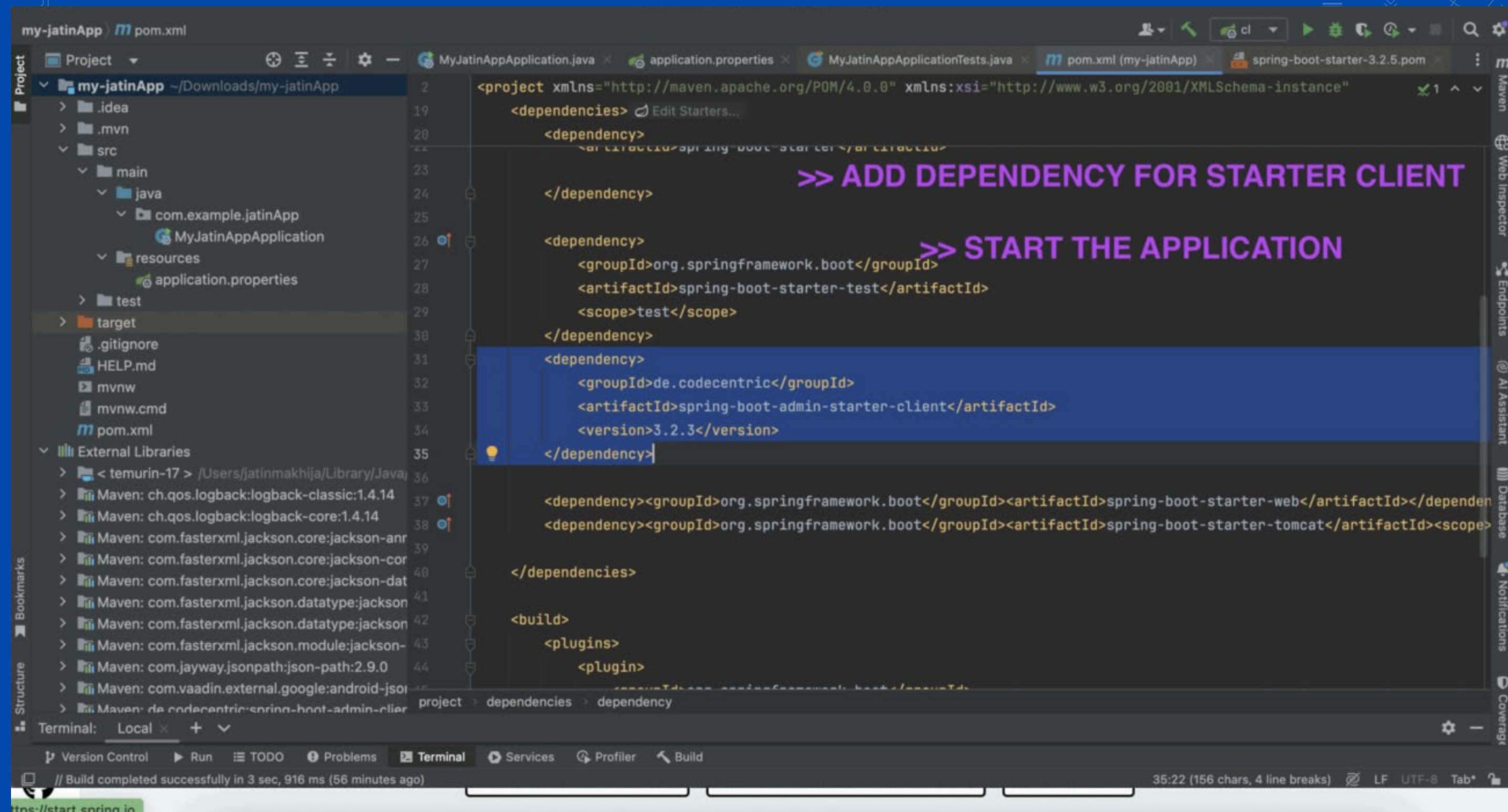
# WHAT IS

# SPRING BOOT ADMIN?





# SBA SETUP



The screenshot shows an IDE window with a Maven `pom.xml` file open. The file content is as follows:

```
<project xmlns="http://maven.apache.org/POM/4.0.0" xmlns:xsi="http://www.w3.org/2001/XMLSchema-instance"
  <dependencies>
    <dependency>
      <groupId>org.springframework.boot</groupId>
      <artifactId>spring-boot-starter</artifactId>
    </dependency>
    <dependency>
      <groupId>org.springframework.boot</groupId>
      <artifactId>spring-boot-starter-test</artifactId>
      <scope>test</scope>
    </dependency>
    <dependency>
      <groupId>de.codecentric</groupId>
      <artifactId>spring-boot-admin-starter-client</artifactId>
      <version>3.2.3</version>
    </dependency>
    <dependency>
      <groupId>org.springframework.boot</groupId>
      <artifactId>spring-boot-starter-web</artifactId>
    </dependency>
    <dependency>
      <groupId>org.springframework.boot</groupId>
      <artifactId>spring-boot-starter-tomcat</artifactId>
      <scope>runtime</scope>
    </dependency>
  </dependencies>
  <build>
    <plugins>
      <plugin>
        <groupId>org.springframework.boot</groupId>
        <artifactId>spring-boot-maven-plugin</artifactId>
      </plugin>
    </plugins>
  </build>
</project>
```

Annotations in the image include:

- >> ADD DEPENDENCY FOR STARTER CLIENT** pointing to the `spring-boot-starter` dependency.
- >> START THE APPLICATION** pointing to the `spring-boot-starter-test` dependency.

The IDE interface shows the project structure on the left, including `src/main/java/com/example/jatinApp/MyJatinAppApplication` and `resources/application.properties`. The terminal at the bottom shows a successful build message: `// Build completed successfully in 3 sec, 916 ms (56 minutes ago)`.

# AGENDA

## UP NEXT



Leveraging SBA



Bugs, Incidents & Logs Management



Feature Flags & Product Owners



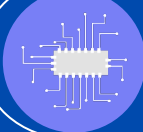
Automating & Automation with Sprint Boot Admin



Health Checks & Monitoring



Heap dumps & Thread dumps



Timeouts & TTL



Scale & Security



Jatin Makhija



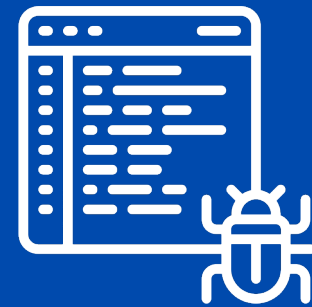


# LEVERAGING SBA





# BUGS, INCIDENTS & LOGS



“Kids fix bugs,  
legends solve incidents”



Fix  
BUGS



Solve  
INCIDENTS

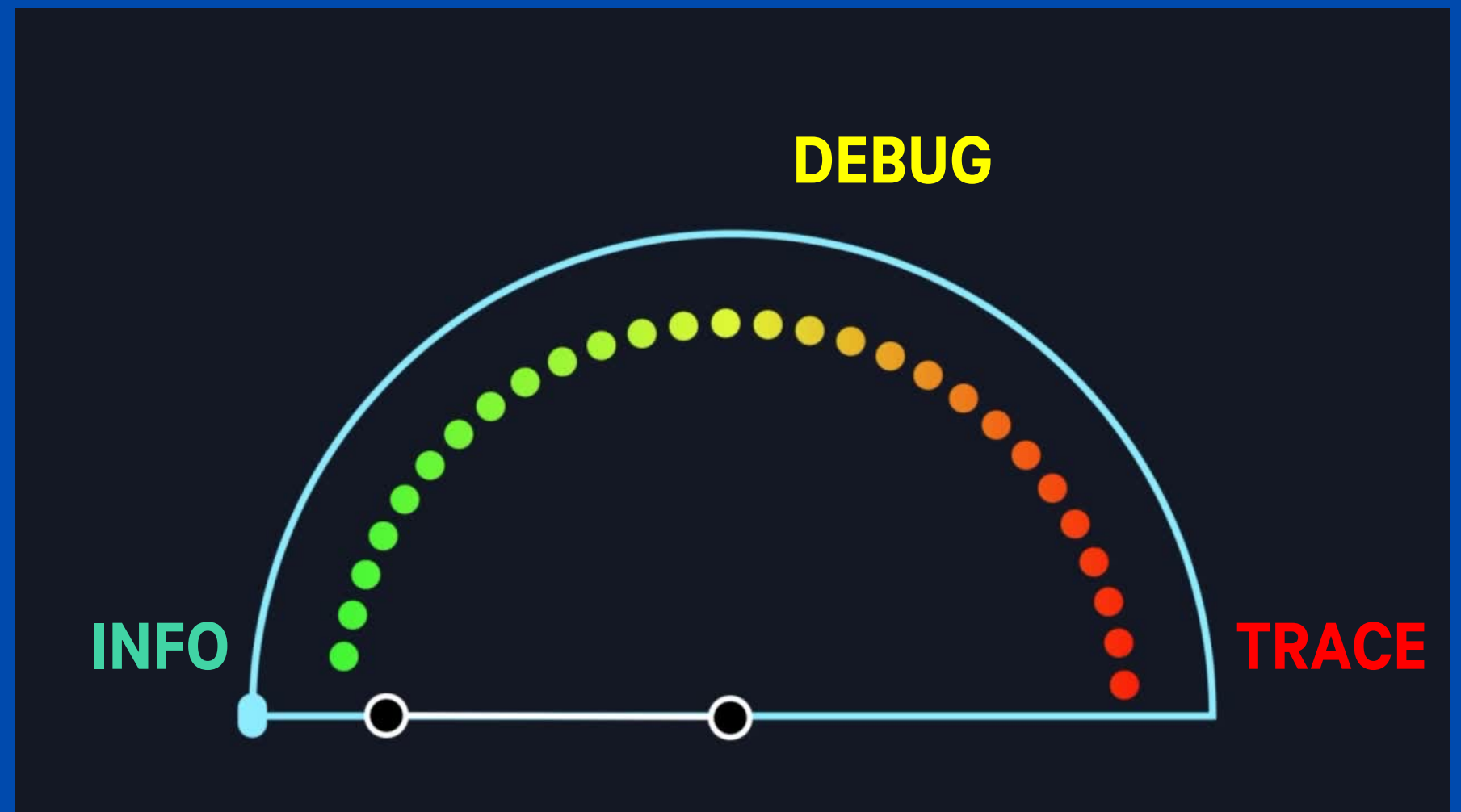




NO LOGS,  
NO PROBLEM

From info to trace in

**3s**





# SENSITIVE LOGS, Eh?



**IS IT SAFE?**

**YES!**



**IS IT THE RIGHT THING TO  
DO ON PRODUCTION?**

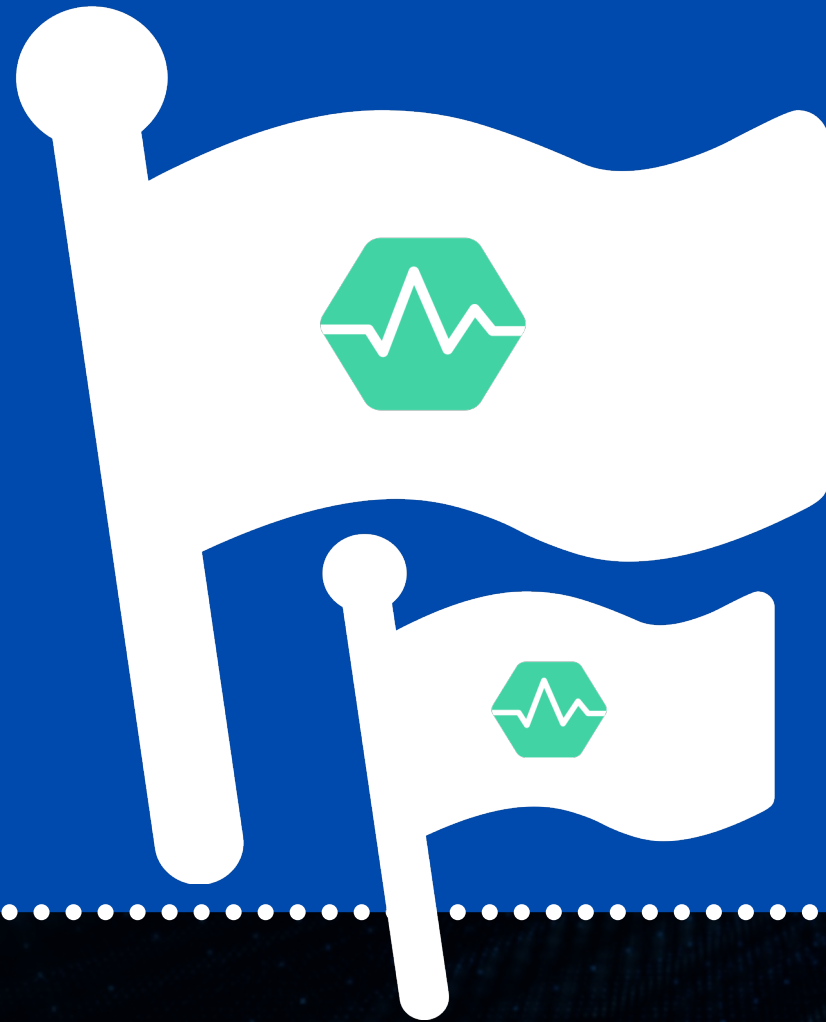
**DON'T FORGET TO REVERT!**



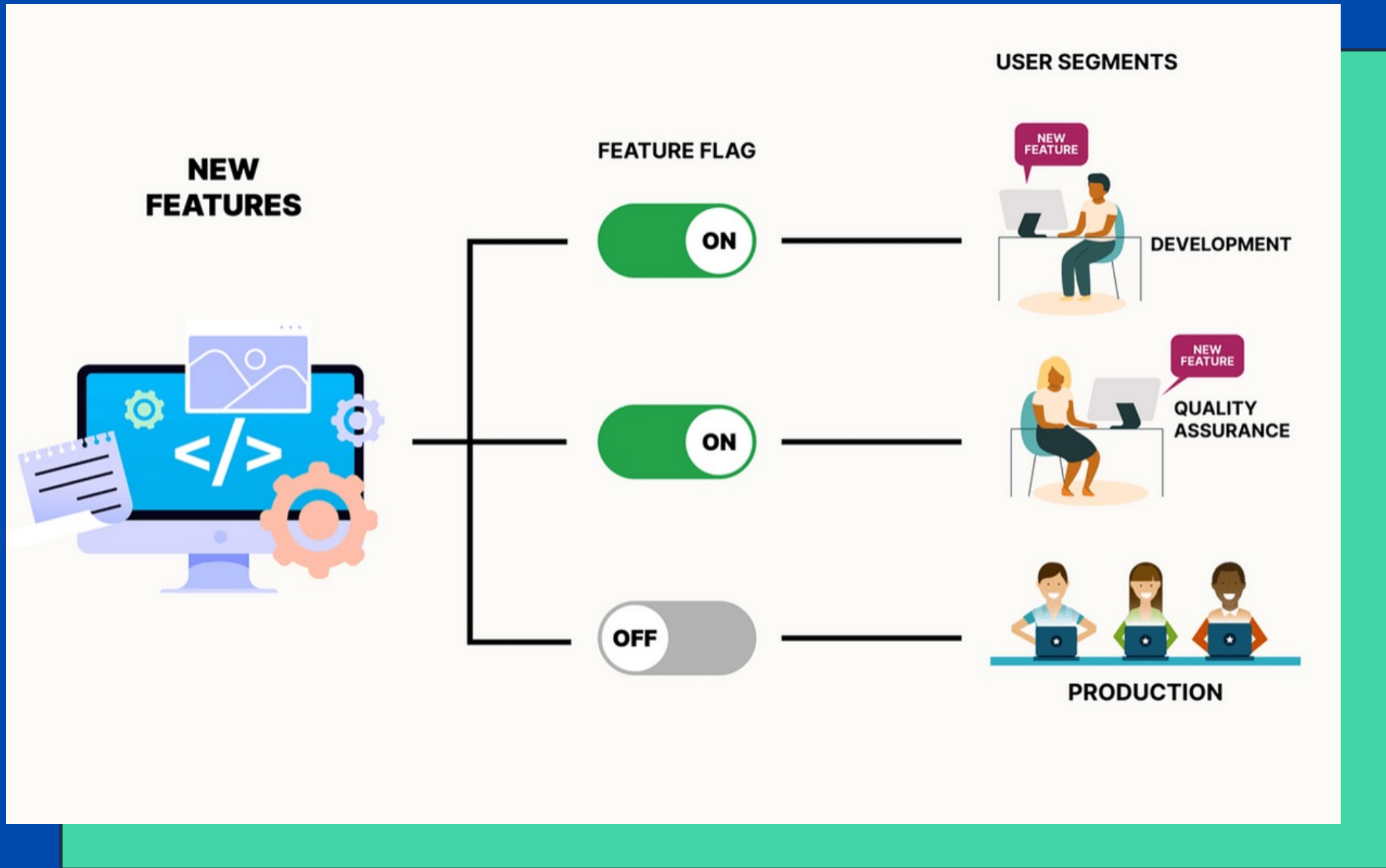
**IS IT GDPR  
COMPLIANT?**

**MASK THE PII**

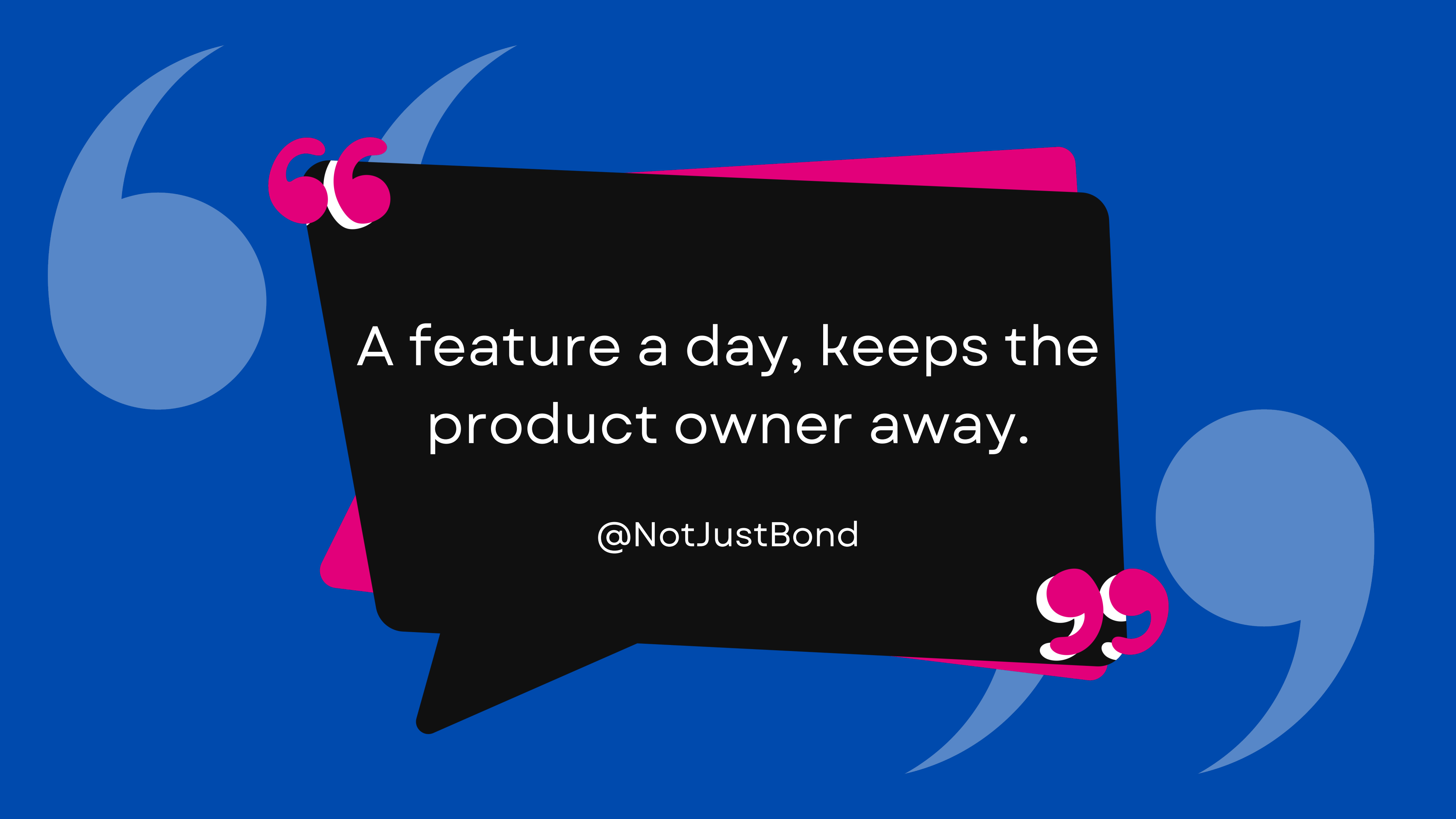
# FEATURE FLAGS







# FEATURE FLAGS IN MULTITENANT APPLICATIONS



A feature a day, keeps the  
product owner away.

@NotJustBond



I GOT

99

FEATURES

but don't know  
how to test  
01 of them

# REAL ~~FEATURE~~ PROBLEM





# DEMO FEATURE FLAGS



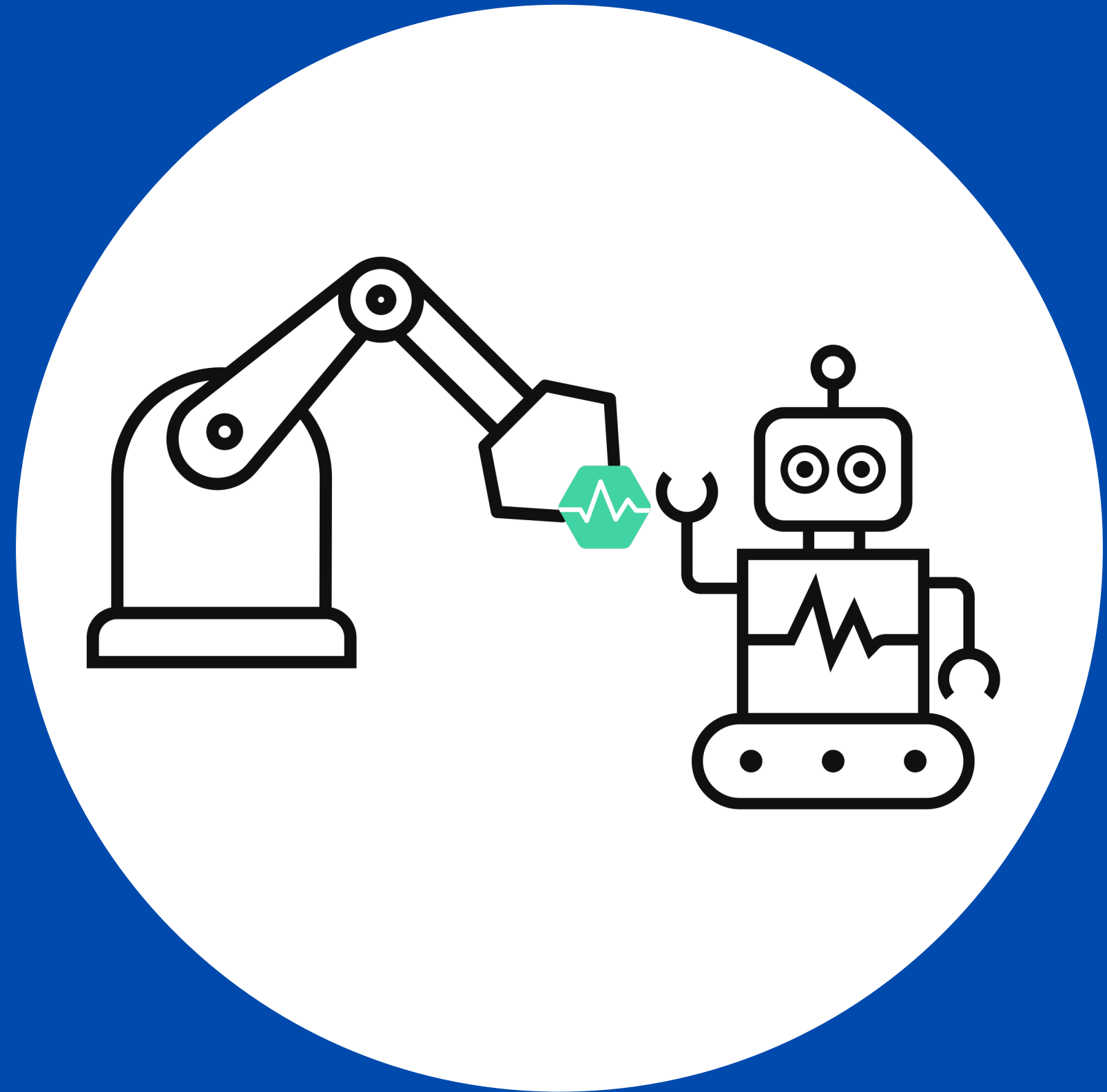




# STABILITY & COVERAGE

- ✓ No more wait time
- ✓ No more re-deployments
- ✓ Refresh in blink of an eye
- ✓ Increased test coverage

AUTOMATION  
AUTOMATION  
AUTOMATION  
**AUTOMATION**  
AUTOMATION  
AUTOMATION  
AUTOMATION





# SNEAK PEAK INTO ARCHITECTURAL DESIGN





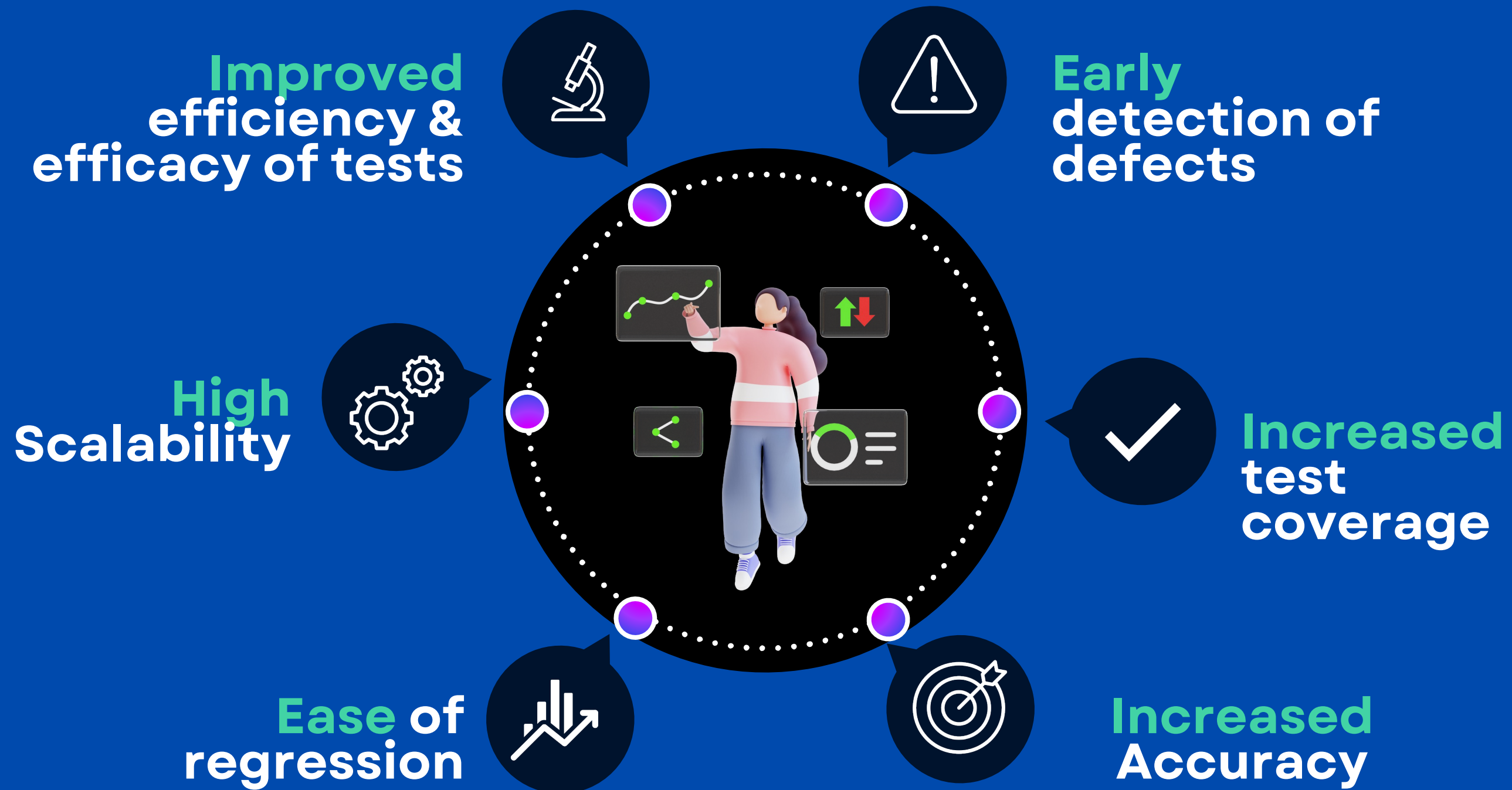
Source: flaticon.com



# DEMONSTRATION



# AUTOMATE TO ELEVATE







# METRICS & MONITORING



Jatin Makhija





**DEMO**





# WHO LET THE CODE OUT?

- When was the last build done?
- Did it successfully roll up to all Kubernetes 40 pods?
- Who did it?
- What is the tag/branch deployed?
- Was it done on blue, or green or both?



eshop-bff-assembly  
b0c6ec11ff60

Insights

Details

Metrics

Environment

Beans

Configuration  
Properties

Scheduled Tasks

Loggers

JVM

Mappings

Caches

Info

git commit:  
id:  
describe-short: 24.08.1\_prod-1478  
describe: 24.08.1\_prod-1478-g6244e92  
abbrev: 6244e92  
full: [6244e9256bc4147567edbf23117f347ddbhellobbbe](#)  
time: 2024-05-13T11:26:28Z  
message:  
full: [ECDEV-27000: Different layout of device listing for SME/LE applications](#)  
short: ECDEV-27000: Different layout of device listing for SME/LE  
user:  
email: [jatin.makhija@telekom-digital.com](mailto:jatin.makhija@telekom-digital.com)  
name: Jatin Makhija  
branch: qa  
build:  
time: [2024-05-13T11:31:00Z](#)  
version: 1.9.0-SNAPSHOT  
user:  
name: jenkins  
email: [jenkinsworld@telekom-digital.com](mailto:jenkinsworld@telekom-digital.com)  
host: ip-172-xx-4-101  
dirty: false  
tags:  
closest:  
tag:  
commit:  
count: 1478  
name: [24.08.1\\_prod](#)  
remote:  
origin:  
url: <https://git.iCannotShare.com/eshop/eshop-bff.git>



# DEPENDENCIES & OVERRIDE

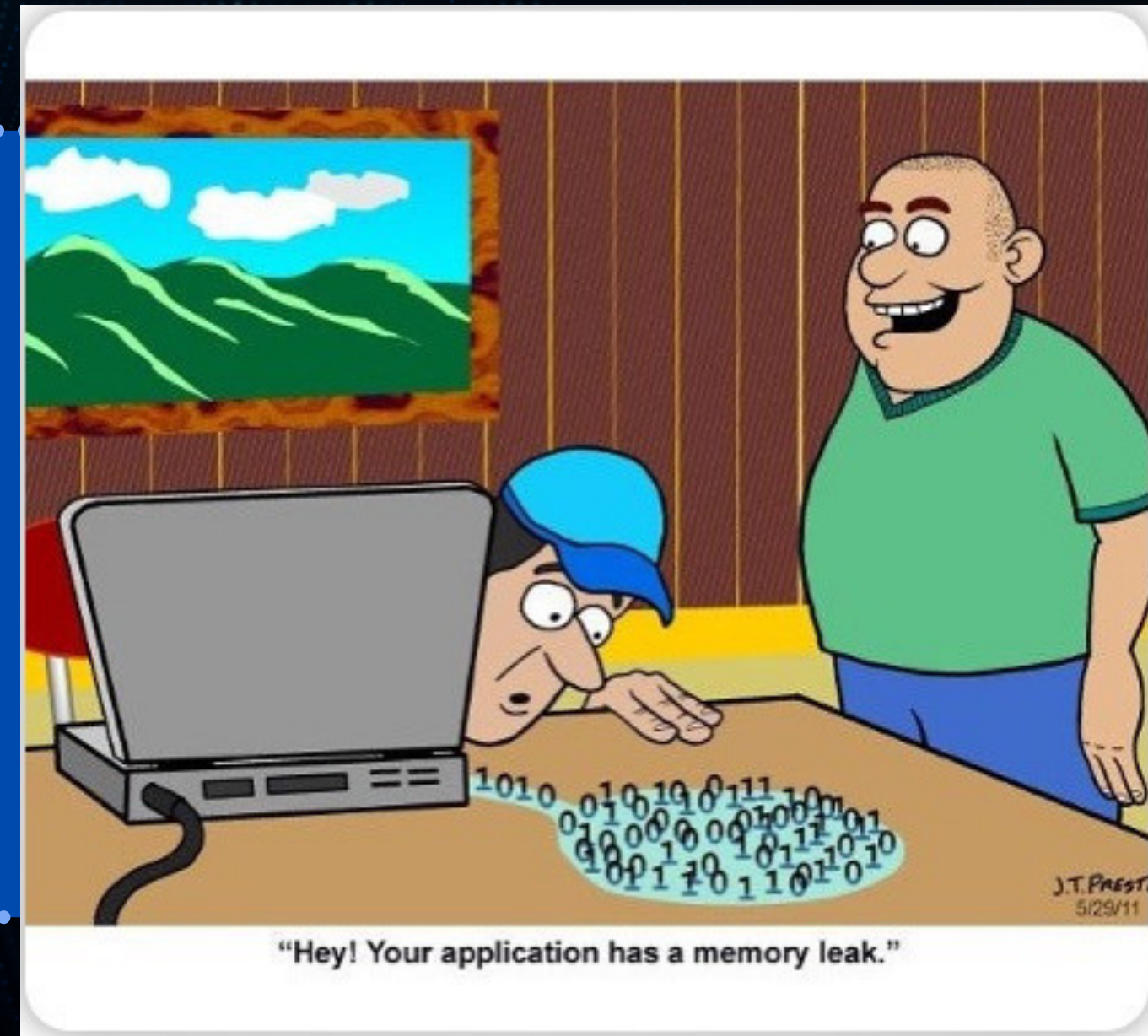


```
<plugin>
  <groupId>pl.project13.maven</groupId>
  <artifactId>git-commit-id-plugin</artifactId>
  <executions>
    <execution>
      <id>get-the-git-infos</id>
      <goals>
        <goal>revision</goal>
      </goals>
    </execution>
  </executions>
</plugin>
```





# HEAP DUMPS



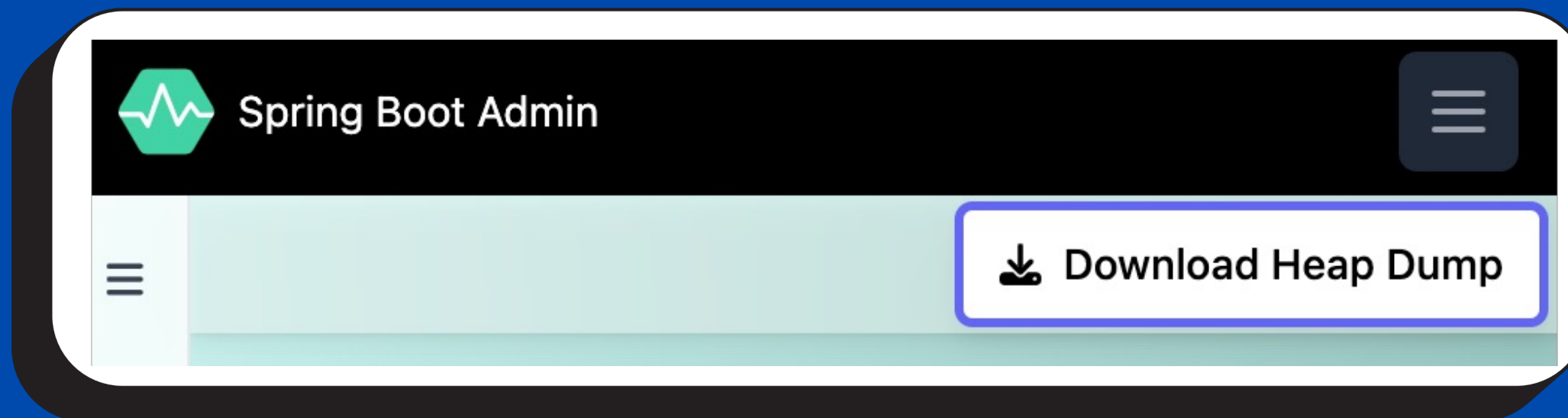


```
-XX:+HeapDumpOnOutOfMemoryError -  
XX:HeapDumpPath=/opt/tmp/heapdump.bin
```

```
jmap -dump:format=b,file=/opt/tmp/heapdump.bin 37320
```

```
GET  
http://{ip}:9091/actuator/heapdump
```

JVisualVM





# THREAD DUMPS

ot Admin Wallboard Applications Journal About jatin.makhija en

[Download Thread Dump](#)

Name	15:38:4015:38:4515:38:5015:38:5515:39:0015:39:0515:39:1015:39:1515:39:2015:39:2515:39:3015:39:3515:39:4015:39:4515:39:5015:39:5515:40:0015:40:0515:40:
R Reference Handler	
W Finalizer	
R Signal Dispatcher	
W Common-Cleaner	
R oneagentsubpathsender 1...	
R oneagentperiodicevents...	
R oneagentperiodicrequests	
R oneagentperiodiccurls	
w elastic-apm-configuration...	
w elastic-apm-type-cache...	
w elastic-apm-server-report...	





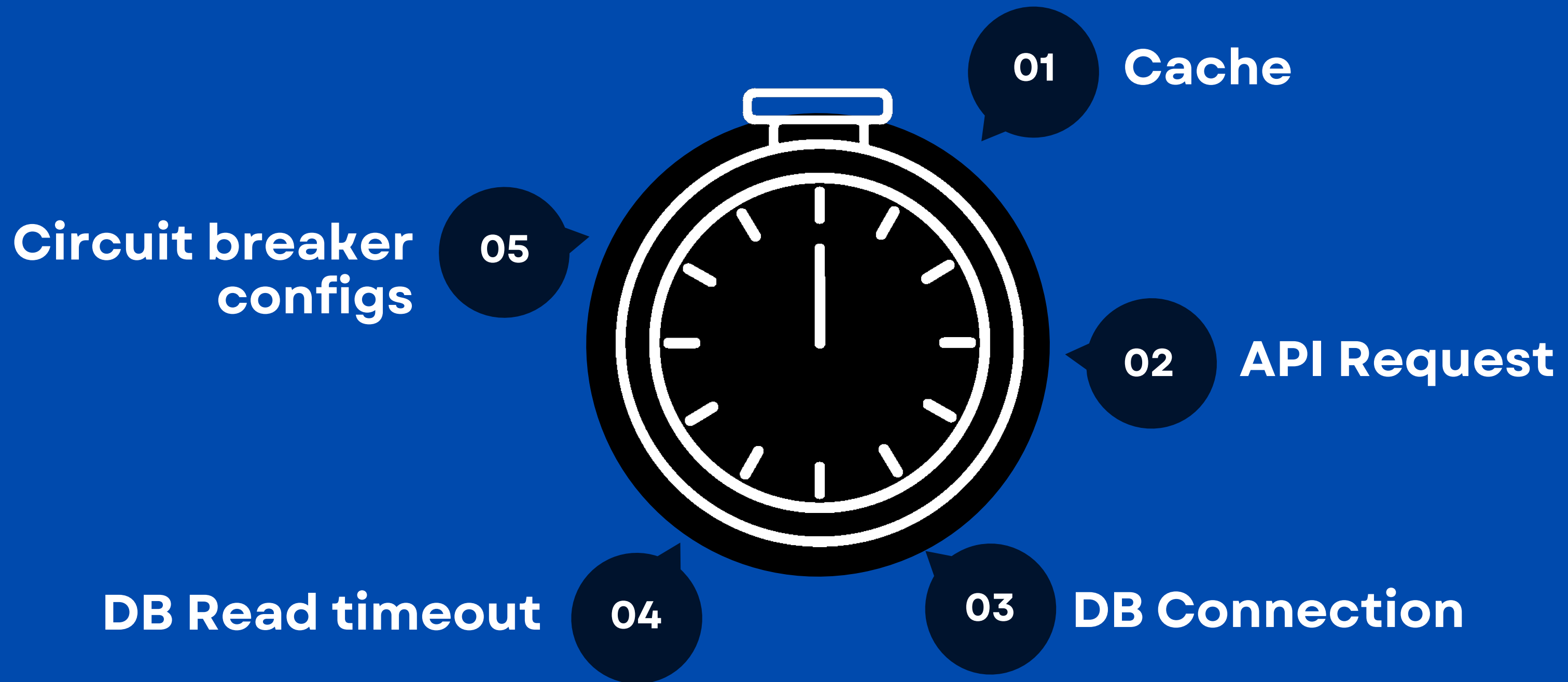
# TIMEOUTS & TTL







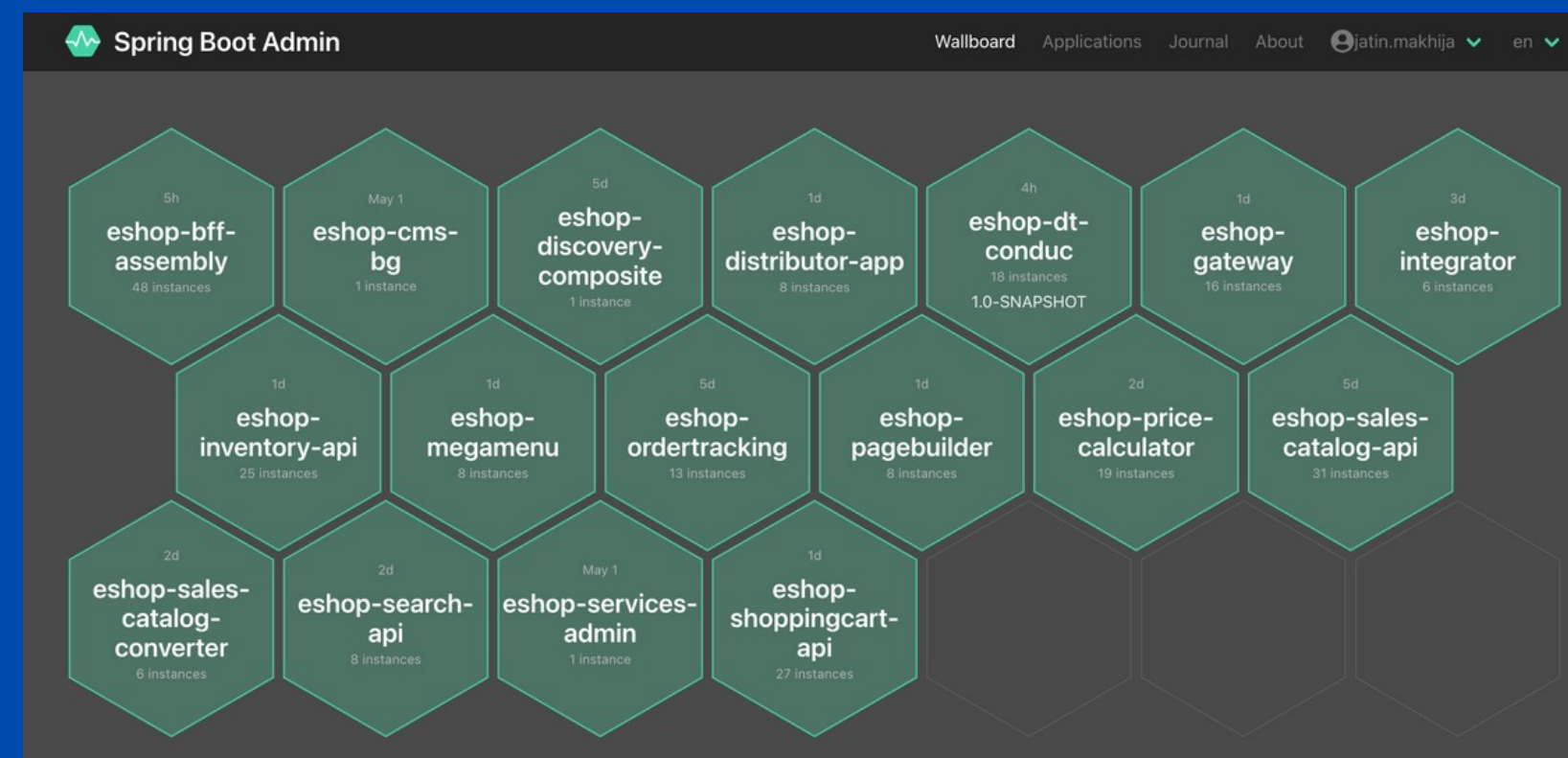
# TIMEOUTS & TTL



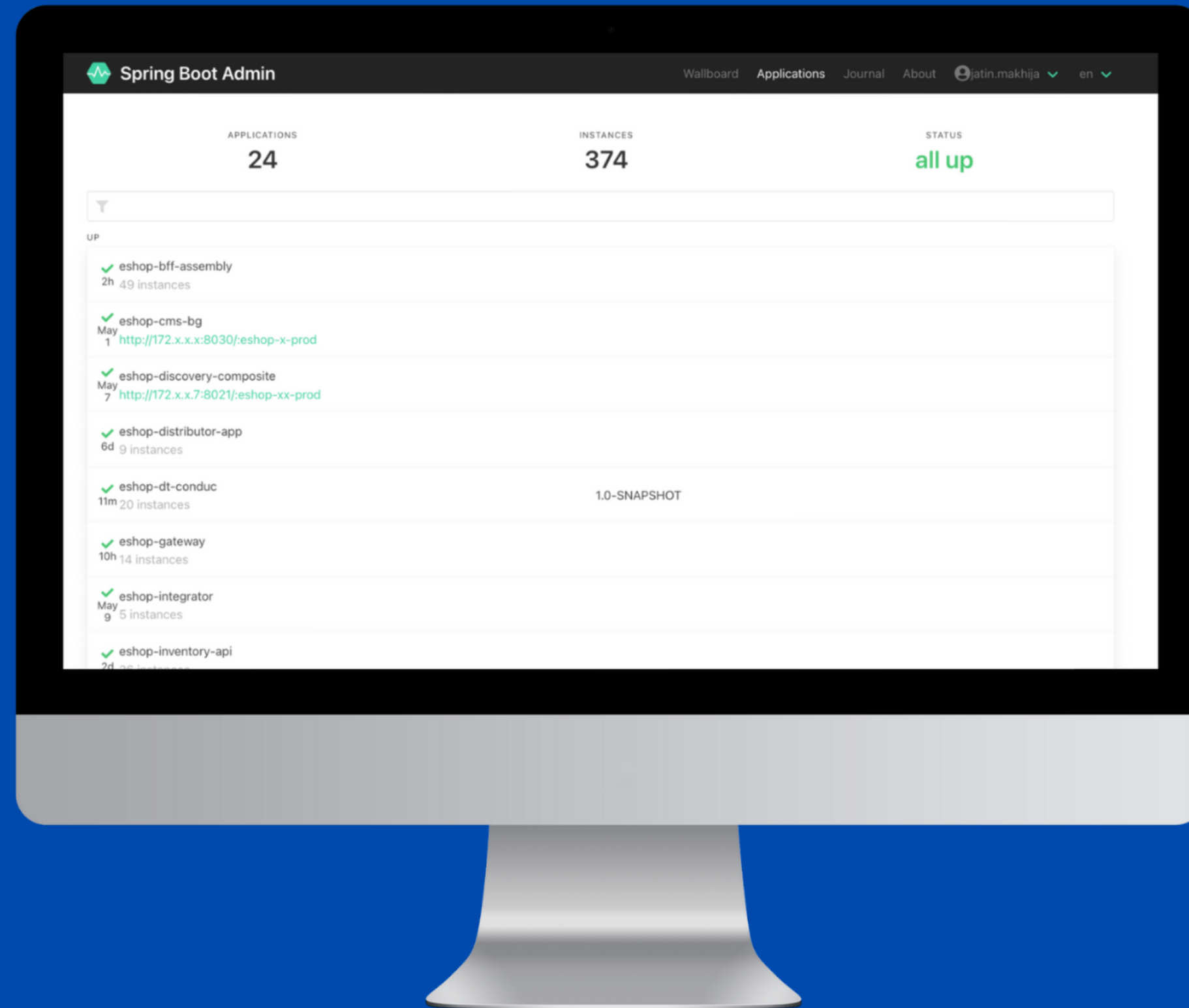




# SBA @ SCALE









# SECURITY & ACCESS CONTROL





Role	Summary	Access Level
SERVICE_ADMIN	Basic role to access SBA and get information like environment, configuration, loggers, beans, and JVM stats.	Level 1
SERVICE_ADMIN_ENV_EDIT	Update a particular environment property with the desired value in memory.	Level 2
SERVICE_ADMIN_CONFIG_REFRESH	Complete refresh of refreshable properties and bean using the /refresh end point	Level 2
SERVICE_ADMIN_THREADDUMP	Can perform a thread dump	Level 3





# Thank You for your time!



[jatinmakhija](#)



[NotJustBond](#)



[jatin.makhija@telekom-digial.com](mailto:jatin.makhija@telekom-digial.com)



Jatin Makhija

